

BUFFALO ATLEE WIND FARM 1/2/3

SUMMER 2020 // NEWSLETTER

In this Issue:

- Design Update
- Community Benefits Plan
- Next Steps
- Contact Us

Capstone Infrastructure Corporation (Capstone), in partnership with Sawridge First Nation, is planning to develop, build and operate the Buffalo Atlee Wind Farm, comprised of the project areas 1, 2 and 3 located approximately 10 km southeast of the hamlet of Jenner in the rural municipality of Special Areas No.2 in Alberta.

What's New?



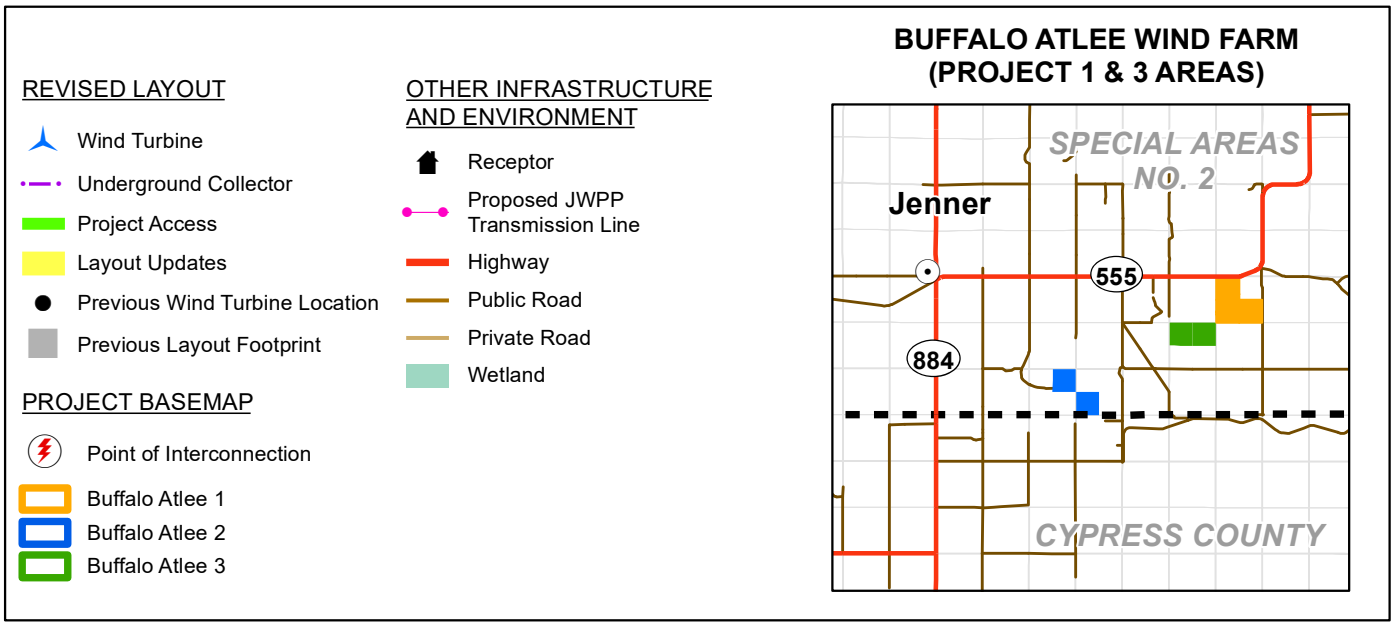
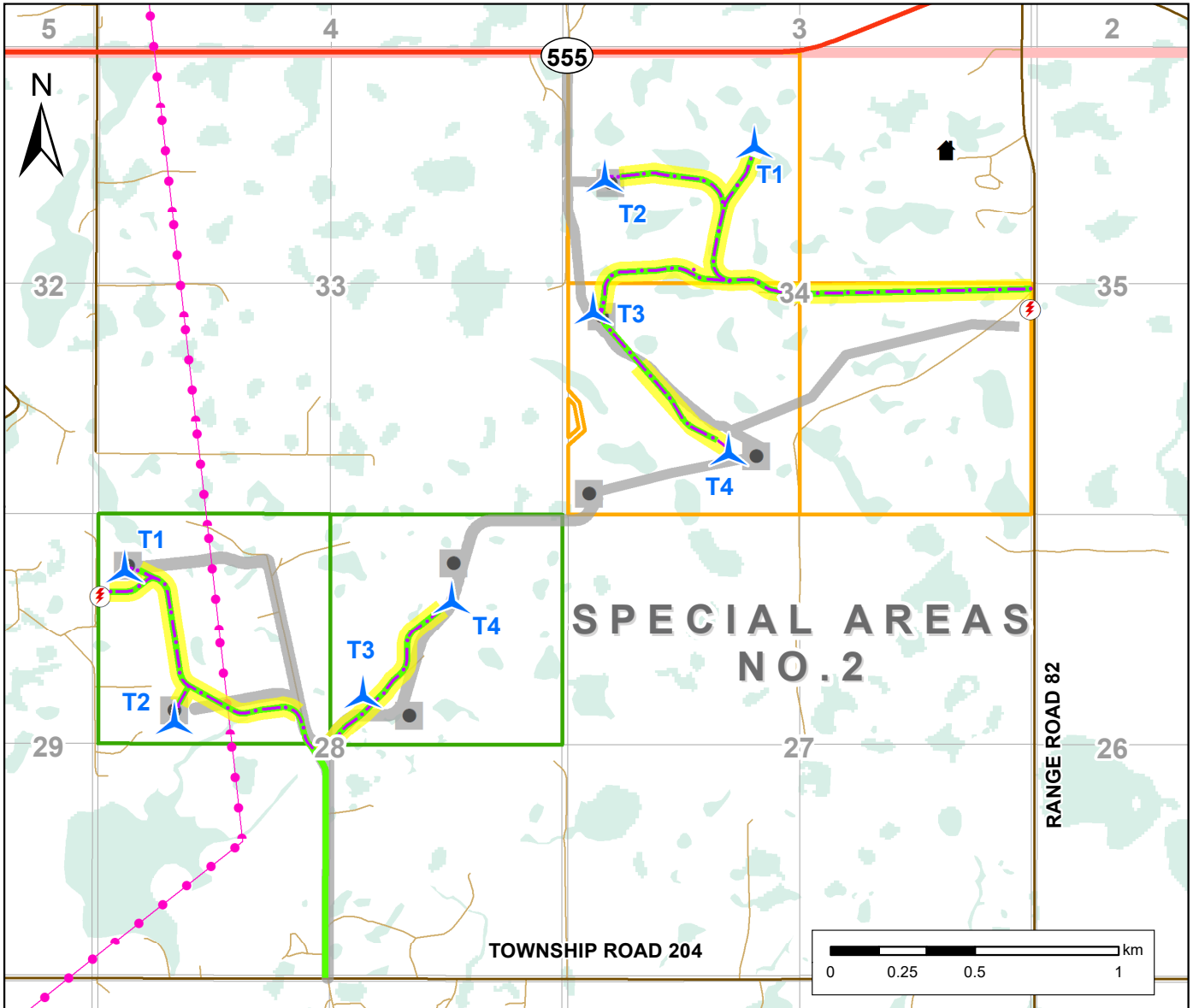
Design Updates

In response to comments from the Alberta Utilities Commission (AUC), the project team has worked hard in the past few months to update the siting of turbines and infrastructure to substantially reduce the environmental effects of the wind farm. Key changes to the design include siting the electrical wires along the access right of ways, relocating some turbines off of native grassland, avoiding setbacks to sensitive raptor nests in the area, and reducing the effects on high value wetlands and grassland by over 50%.

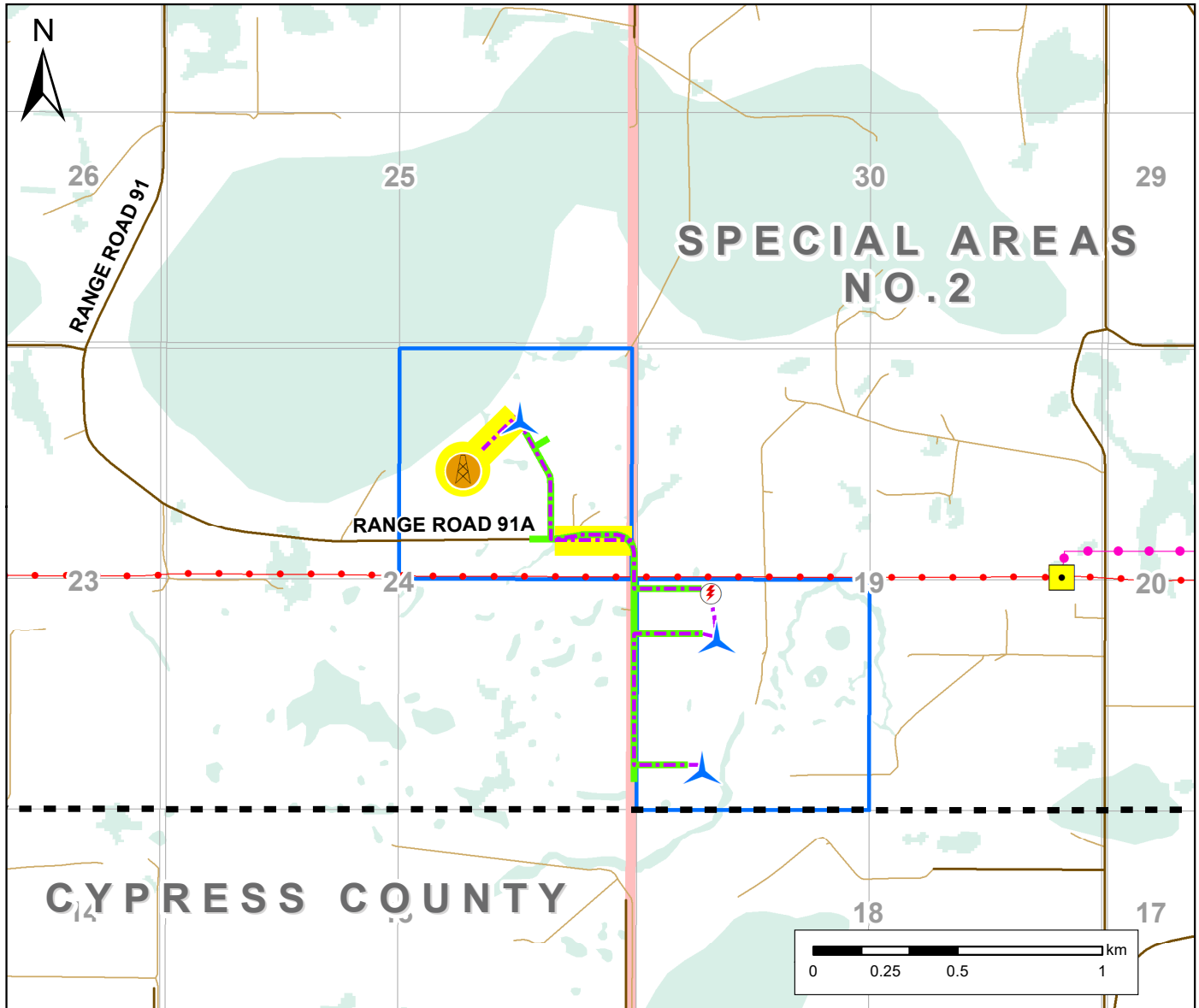
Additionally, the project layout has been updated with the siting of the permanent Meteorological tower at the Buffalo Atlee 2 project area. The project design continues to use the Siemens-Gamesa SG145 turbine (with 4.0 to 4.6 megawatts of generating capacity) and 127.5m hub height for the design of the wind farm. Each turbine has 3 blades, each with a length of 72.5m.

Maps of the updated design for the wind farm are presented within this newsletter and are also posted on the project website for your review and consideration.

Updated Project Layout



Updated Project Layout



PROJECT LAYOUT

- Meteorological Tower
- Wind Turbine Layout
- Underground Collector
- Project Access
- Layout Update

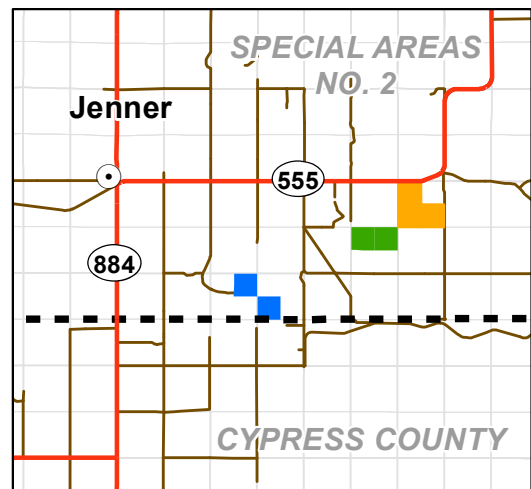
PROJECT BASEMAP

- Point of Interconnection
- Buffalo Atlee 1
- Buffalo Atlee 2
- Buffalo Atlee 3

OTHER INFRASTRUCTURE AND ENVIRONMENT

- Jenner Substation
- Proposed JWPP Transmission Line
- Transmission Line
- Highway
- Public Road
- Private Road
- Wetland

BUFFALO ATLEE WIND FARM (PROJECT 2 AREA)



Community Benefit Plan

Following feedback received through the open houses and consultation meetings held in 2019, a community benefits framework is being prepared which will be supported by the wind farm once operational.

The plan currently contemplates regular annual contributes for local benefits over the next 20 years. The plan will ensure that the value of the facility is brought directly to the local community hosting the project long term.

The Community Benefit Plan will focus on two main areas:

Green Bursaries

Buffalo Atlee commits to funding annual student bursaries over the next 20 years for local students attending Jenner School who need financial assistance in their current or future studies. Capstone will work closely with Jenner School to ensure the bursaries will go to the most appropriate students.

Sustainability Fund

This fund will go towards local initiatives within the community for appropriate projects associated with sustainability or renewable energy. Local groups that might be a good fit include the Jenner Fire Hall, the school, the community centre or local youth groups.



Next Steps

New project reports for noise and shadow flicker as well as updated photo-simulations will be submitted to the AUC based on the updated project layout. All updated reports and studies will as well be posted to the project website.

The AUC process remains ongoing, and is anticipated that the review will continue into late 2020/ early 2021. Final approval from the AUC is anticipated sometime in summer 2021. Construction is anticipated to commence in summer/fall 2021.



Further updates and consultation on the approval process, the Community Benefits Plan, and the anticipated start of construction will be provided as the process proceeds. Anyone with questions about the wind farm, the design updates, or the Community Benefits Plan should contact the Capstone team at the contacts provided below.

Contact Us

We will continue to keep you updated by mail and through the project website. Please contact us if you have any further questions on the project plans or information.

Jody Refvik, Community Relations

Andrea Kausel, Vice President, Development

Email: buffaloatlee@capstoneinfra.com

Phone: 403-290-8877

Website: www.buffaloatlee.com



www.capstoneinfrastructure.com

155 Wellington Street West, Suite 2930
Toronto, Ontario M5V 3H1



sawridgefirstnation.com

806 Caribou Trail NE
Slave Lake, Alberta T0G 2A0